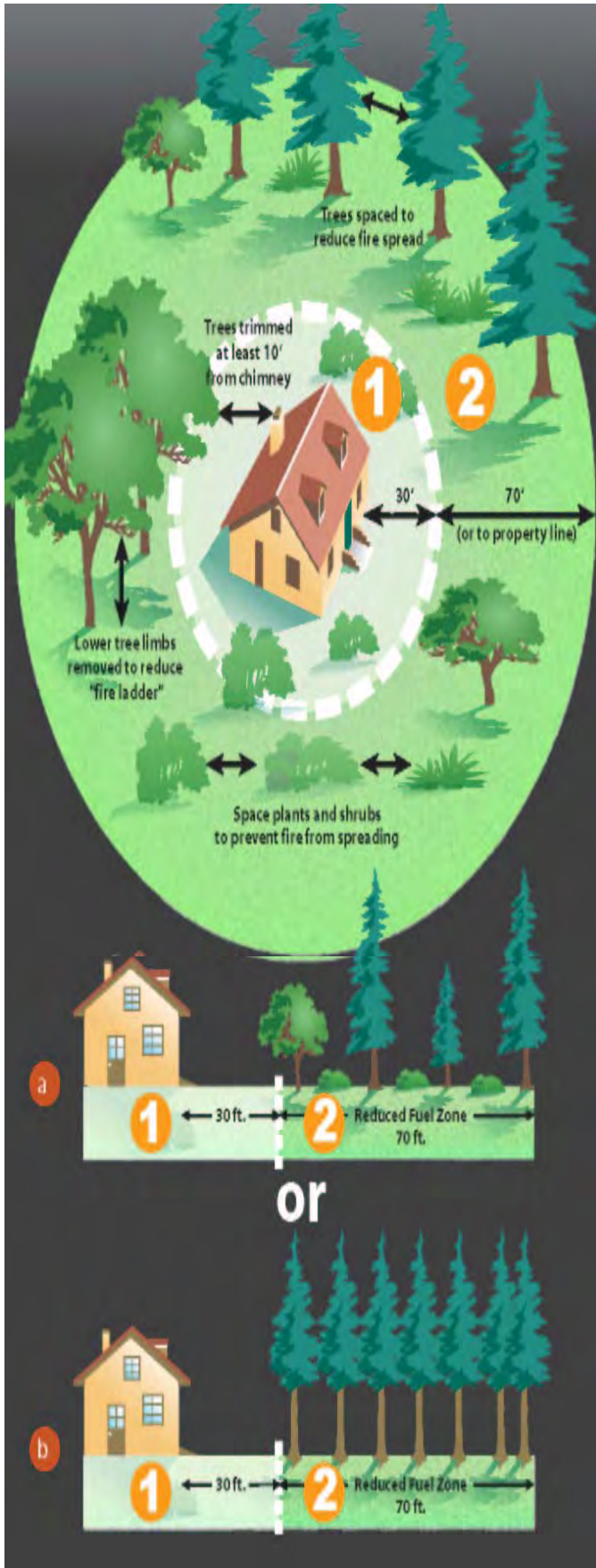


# THE WILDFIRE INCIDENT



~ DEFENSIBLE SPACE ~

Thermo-Gel



## Why 100 Feet?

Following these simple steps can dramatically increase the chance of your home surviving a wildfire!

A **Defensible Space** of 100 feet around your home is required by law. The goal is to protect your home while providing a safe area for firefighters.

### 1. “Lean, Clean and Green Zone.”

Clearing an area of 30 feet immediately surrounding your home is critical. This area requires the greatest reduction in flammable vegetation.

### 2. “Reduced Fuel Zone.”

The fuel reduction zone in the remaining 70 feet (or to property line) will depend on the steepness of your property and the vegetation.

Spacing between plants improves the chance of stopping a wildfire before it destroys your home. You have two options in this area:

**a.** Create horizontal and vertical spacing between plants. The amount of space will depend on how steep the slope is and the size of the plants.

**b.** Large trees do not have to be cut and removed as long as all of the plants beneath them are removed. This eliminates a vertical “fire ladder”.

When clearing vegetation, use care when operating equipment such as lawnmowers. One small spark may start a fire; a string trimmer is much safer.

Remove all build up of needles and leaves from your roof and gutters. Keep tree limbs trimmed at least 10 feet from any chimneys and remove dead limbs that hang over your home or garage. The law also requires a screen over your chimney outlet of not more than 1/2 inch mesh.

CalFire.(2007). Why 100 Feet? {Brochure} Retrieved from <http://fire.ca.gov/communications/downloads/fact-sheets/DefensibleSpaceflyerpdf>.

For more information go to [www.firewise.org](http://www.firewise.org)

# THE WILDFIRE INCIDENT



~ READY, SET, GO! ~

## Before the Fire Approaches

### INSIDE CHECKLIST

- Shut all windows and doors, leaving them unlocked.
- Remove flammable window shades and curtains and close metal shutter.
- Remove lightweight curtains.
- Move flammable furniture to the center of the room, away from windows and doors.
- Shut off gas at the meter. Turn off pilot lights.
- Leave your lights on so firefighters can see your house under smoky conditions.
- Shut off the air conditioning.






### OUTSIDE CHECKLIST

- Gather up flammable items from the exterior of the house and bring them inside (e.g., patio furniture, children's toys, door mats, etc.) or place them in your pool.
- Turn off propane tanks
- Don't leave sprinklers on or water running they can waste critical water pressure.
- Leave exterior lights on.
- Back your car into the driveway. Shut doors and roll up windows.
- Have a ladder available.
- Patrol your property and extinguish all small fires until you leave.
- Seal attic and ground vents with pre-cut plywood or commercial seals if time permits.

## Homeowner Fire Protection Kit Added Protection for Your Home



Kit Contents:  
4 -1 gallons containers  
1 Garden Hose applicator  
1 Instructional DVD  
1 Instruction Sheet

-  US Forest Service Approved.
-  Environmentally compatible.
-  Rinses off with plain water.
-  Protects your home, shrubs, trees, propane tanks and outbuildings for several hours.
-  Can be applied quickly and efficiently with a standard garden hose.



Home saved by a "gel" strike team during the Jesusita Fire last year.

*Thermo-Gel*